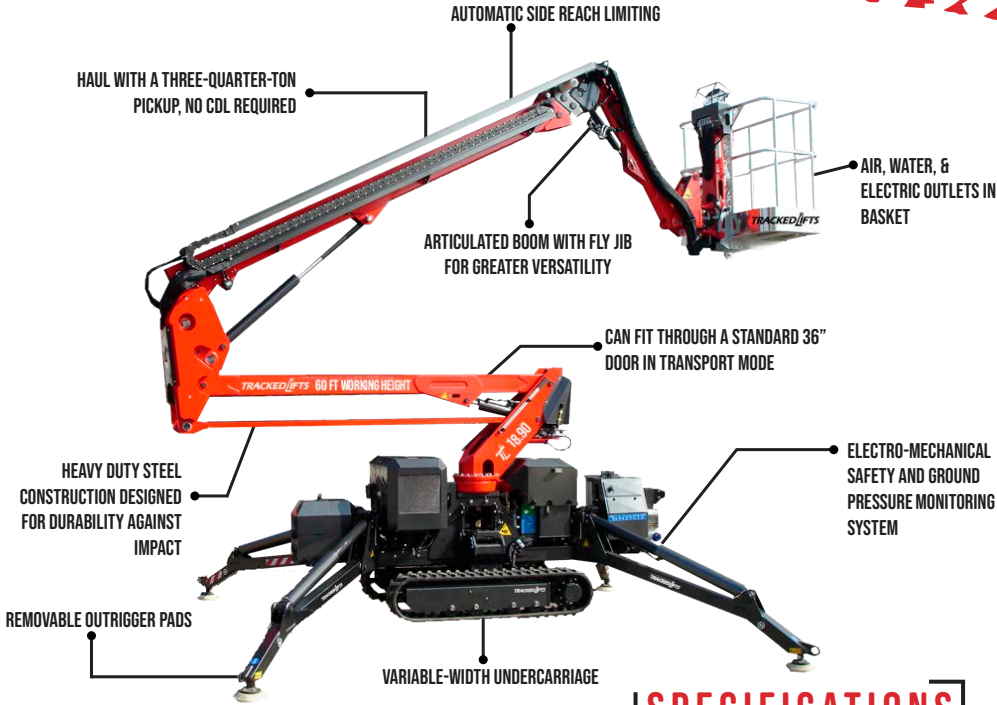


Z 18.90

60' WORKING HEIGHT



SPECIFICATIONS

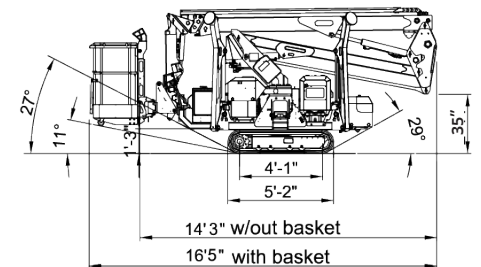
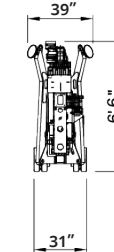
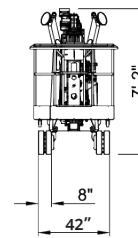
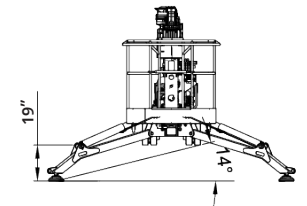
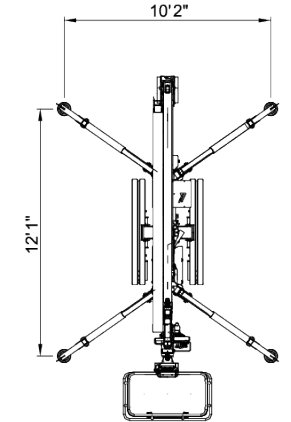
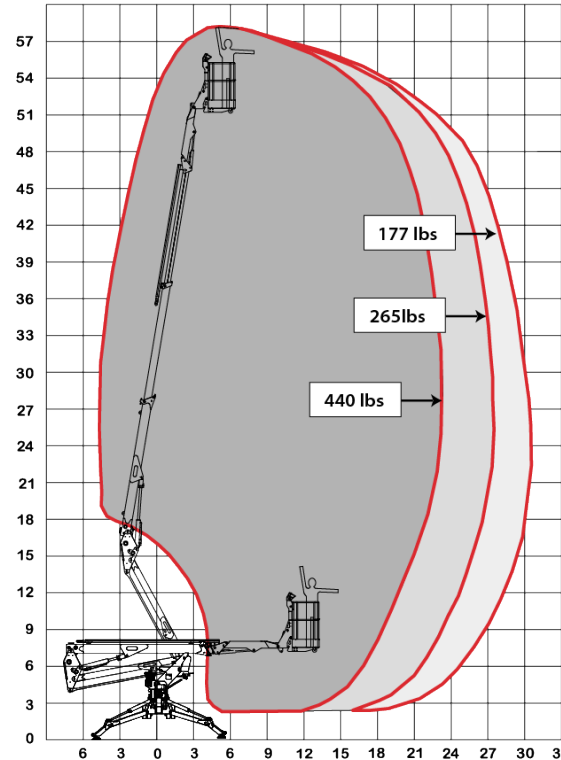
GASOLINE

DIESEL

Max. working height	60'	
Max. outreach	30'10"	
Max. basket load	300lbs	440 lbs
Basket size	2'7" x 2'3" (1-man basket)	4'6" x 2'3" (2-man basket)
Turret rotation	360° non-continuous	
Traveling length	14'3" (16'5" with basket)	
Traveling height	6'6" narrow mode / 7'2" wide mode	
Traveling width	31" narrow mode / 42" wide mode	
Outrigger Spread	10'2" x 12'1"	
Battery	110V Emergency Descent System	
Diesel Engine	Honda Gasoline, 13 HP	Kubota Diesel, 13 HP
Total weight	5,290 lbs	5,577 lbs
Gradability, max. across slope	31% (17°)	
Gradability, max. up and down slope	29% (16°)	
Deployment ability on slopes up to	31% (17°)	

DIAGRAMS

DATA AND DIMENSIONS ARE INDICATIVE AND NOT BINDING



ADD-ON OPTIONS:

- White Rubber Non-Marking Tracks
- Custom Colors
- 2-man Basket
- Kubota Diesel
- Kubota Diesel + 24V Battery Hybrid
- Emergency 12V Hydraulic System
- Drive & Stabilization Radio Remote Control
- Lithium Ion Battery Pack
- 2 Speed Drive Motors
- Increased Size of Foot Plates (13.75" Diameter)
- Basket Rotation