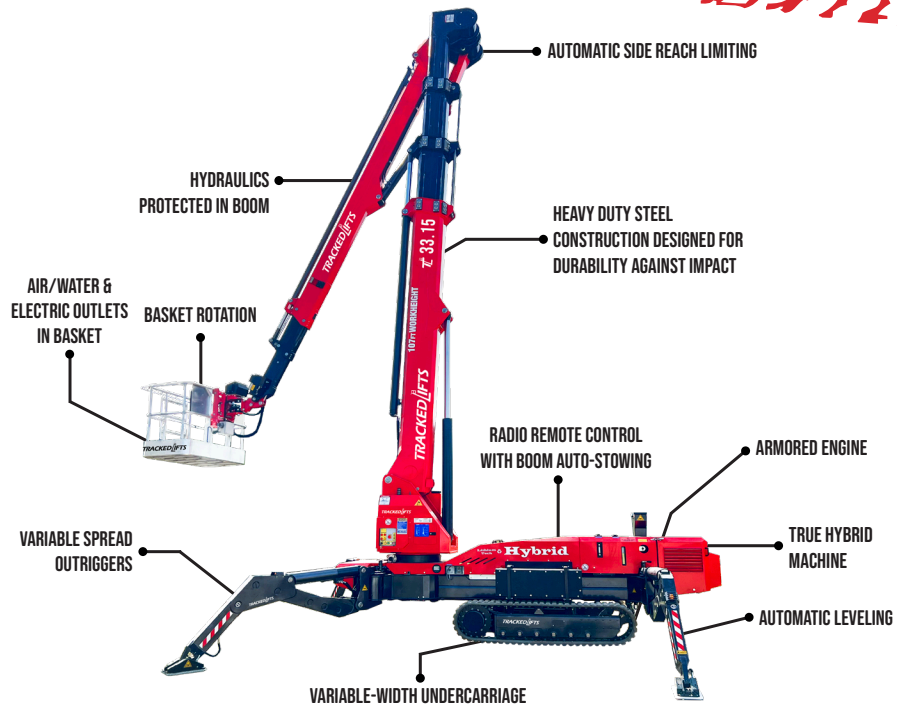


Z 33.15

107' WORKING HEIGHT

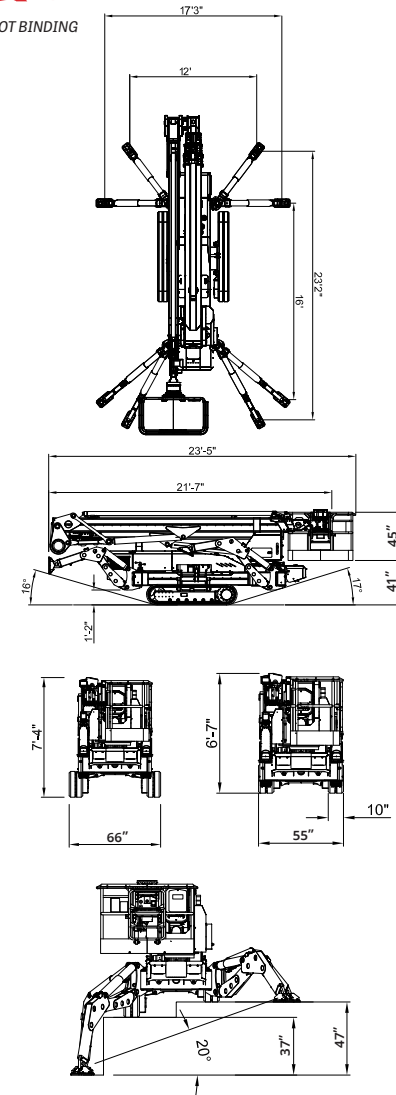
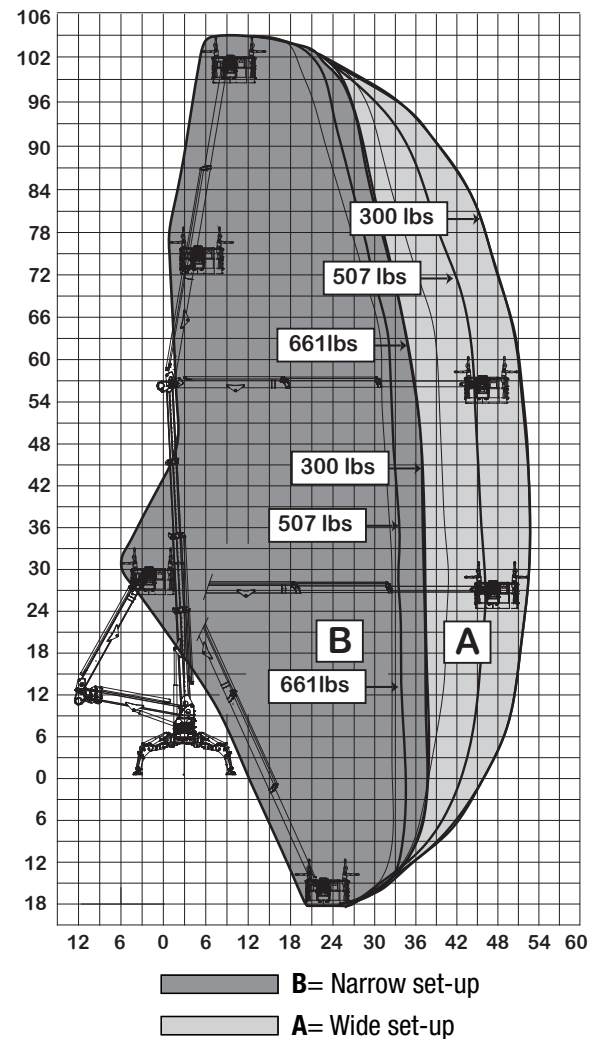


SPECIFICATIONS

| | |
|--|---|
| Max. working height | 107' |
| Max. outreach | 50' |
| Max. basket load | 661 lbs |
| Basket size | 5'5" x 2'11" (2-man basket) |
| Basket rotation | ± 90° |
| Turret rotation | 360° non-continuous |
| Traveling length | 21'7" (23'5" with basket) |
| Traveling height | 6'7" narrow mode / 7'4" wide mode |
| Traveling width | 55" narrow mode / 66" wide mode |
| Outrigger Spread | 16' x 17'3" wide position / 12' x 23'2" narrow position |
| Battery | 24V Lithium Ion Hybrid Power |
| Diesel Engine | Kubota Diesel, 22 HP |
| Total weight | 15,334 lbs |
| Gradability, max. across slope | 31% (17°) |
| Gradability, max. up and down slope | 31% (17°) |
| Deployment ability on slopes up to | 31% (17°) |

DIAGRAMS

DATA AND DIMENSIONS ARE INDICATIVE AND NOT BINDING



ADD-ON OPTIONS:

- White Rubber Non-Marking Tracks
- Custom Colors
- Emergency 12V Hydraulic System
- 110V Hydraulic System